



# ALASKA DIVISION OF HOMELAND SECURITY & EMERGENCY MANAGEMENT



## SITUATION REPORT 25-009• January 9, 2025

Toll-Free 1.800.478.2337

Anchorage Area 907.428.7000

SEOC 907.428.7100

<p><b><u>SEOC Preparedness Level</u></b> Level 1-Routine Operations</p>	<p><a href="http://ready.alaska.gov">http://ready.alaska.gov</a></p>	<p><b><u>National Terrorism Advisory System:</u></b>  <a href="#">Read the NTAS Bulletin here</a></p>
<p><b><u>Maritime Security (MARSEC)</u></b> Level:1- Minimum Appropriate Security Measures</p>	<p><b>WHO Novel Coronavirus Pandemic (COVID-19):</b> <a href="#">2019 Novel Coronavirus</a></p>	<p><b><u>Alaska Military Installation Force Protection</u></b>  <b><u>Level:</u></b> FPCON Bravo</p>

(Significant changes from previous situation reports are red.)

**Significant Issues:**

None

**Department of Health (DOH):**

For current information, see: <https://health.alaska.gov/dph/Pages/default.aspx>  
<https://health.alaska.gov/dph/Emergency/Pages/prepared/default.aspx>

**NTAS Bulletin:**

The U.S. Department of Homeland Security issued an updated National Terrorism Advisory Bulletin on May 24, 2023. The current and expired bulletins can be viewed at the below link.  
<https://www.dhs.gov/national-terrorism-advisory-system>

**Travel Alerts and Conditions:**

**Clondike Hwy will be CLOSED Thursday 1/9/25 -due to increased avalanche danger on Canadian side.**  
For current driving conditions, dial 511 or visit: <https://511.alaska.gov/>

**Barry Arm Landslide / Tsunami Risk:**

For the latest information on the Barry Arm Landslide and Tsunami risk, click here:  
<https://dggs.alaska.gov/hazards/barry-arm-landslide.html>

**Earthquakes:**

United States Geological Service (USGS) Earthquake Information: <http://earthquake.usgs.gov/>  
National Tsunami Warning Center: <http://tsunami.gov/>

**Alaska Volcanoes:**

**Great Sitkin Alert Level: Watch** and Aviation Color Code: **Orange**  
**Mt. Spurr Alert Level: Advisory** and Aviation Color Code: **Yellow**  
For Alaska Volcano updates, go to: <https://www.avo.alaska.edu/>

## Air Quality Index (AQI) Advisories:

For the most up-to-date Air Quality Index Advisories:

<http://dec.alaska.gov/Applications/Air/airtoolsweb/Home/Index>

## Spills of Oil and Hazardous Substances:

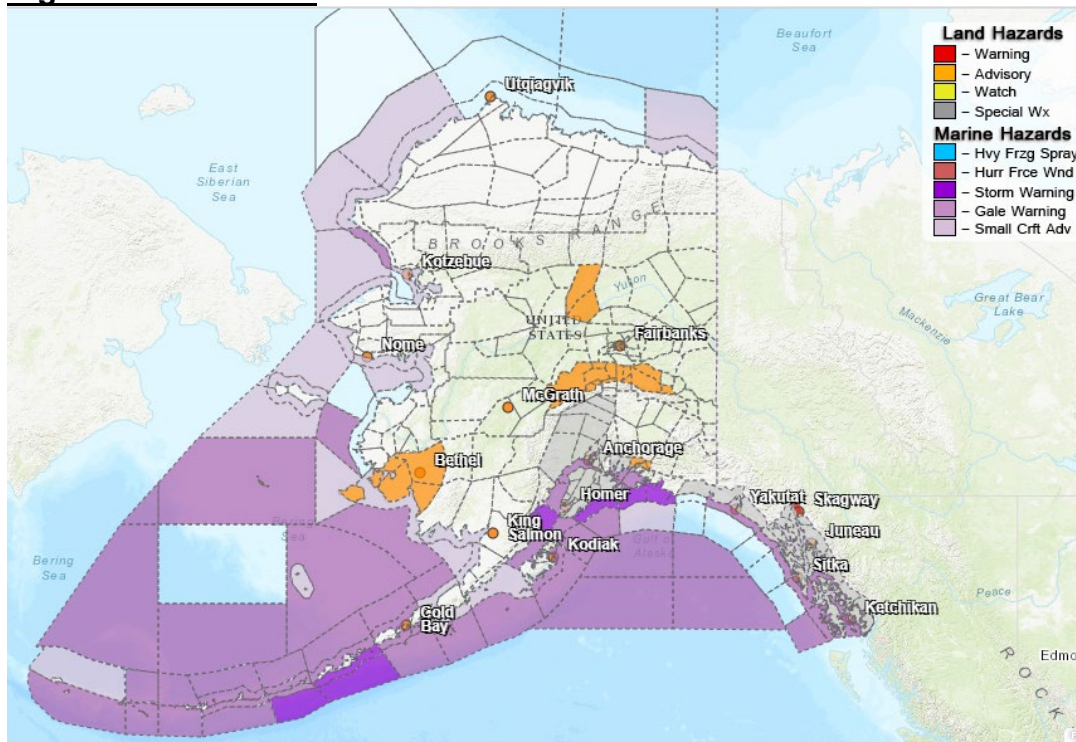
The Alaska Division of Environmental Conservation (ADEC) Spill Prevention and Response page is located at: <https://dec.alaska.gov/spar/>

## Alaska Cyber Security Information:

State Employees may sign up for cybersecurity notifications and alerts at:

<https://oit.alaska.gov/security>

## Significant Weather:



### **Special Weather Statement:**

**City and Borough of Yakutat, Municipality of Skagway, Haines Borough and Klukwan, Glacier Bay, Eastern Chichagof Island, Cape Fairweather to Lisianski Strait, City and Borough of Sitka, Admiralty Island, City and Borough of Juneau, Petersburg Borough, Western Kupreanof and Kuiu Island, Prince of Wales Island, City and Borough of Wrangell, Ketchikan Gateway Borough, City of Hyder, Annette Island-active wet weather continuing for the panhandle through this week.**

### **Winter Storm Warning:**

**Municipality of Skagway-** in effect until 9pm this evening.

### **Winter Weather Advisory:**

**Northeast Prince William Sound-**in effect until 1pm this afternoon through Thompson Pass.

**Dalton Hwy Summits-**in effect until 6pm this evening.

### **Flood Advisory:**

**Western Kenai Peninsula-**for an ice jam in effect until 12:30pm Thursday.

### **Wind Advisory:**

**Northern Denali Borough, Eastern Alaska Range North of Trims Camp-**in effect from 3am Saturday to 3am Sunday.

**Delta Junction**-in effect from 3am Sunday to 3am Monday.

**High Wind Watch:**

**Northern Denali Borough, Eastern Alaska Range North of Trims Camp**-in effect from 3am Saturday to 3am Sunday.

**Coastal Flood Advisory:**

**Kuskokwim Delta**- in effect from noon Friday to 5am Saturday.

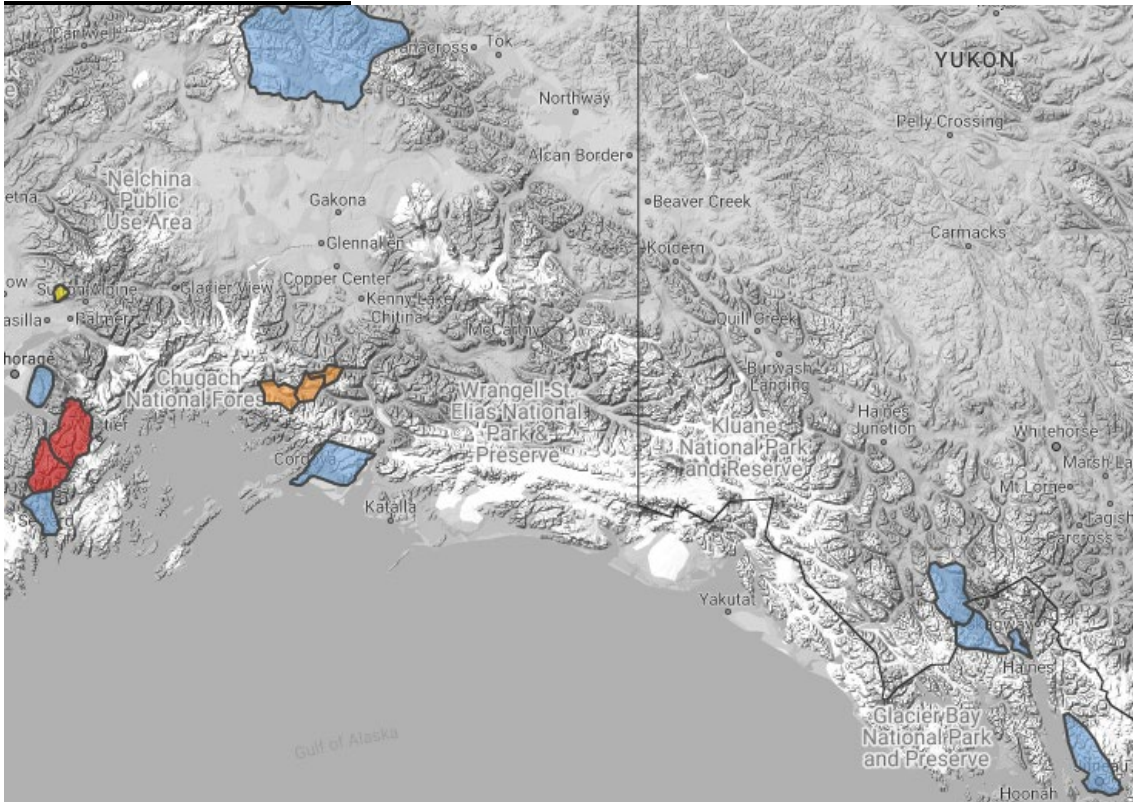
**Hydrologic Outlook:**

**Anchorage, Matanuska Valley, Western Kenai Peninsula, Western Prince William Sound, Susitna Valley**-warm temp and widespread rainfall leading to rising water, overflow and open water on area creeks and streams.

For more information and the most current Weather, Watches/Warning/Advisories go to:

<https://www.weather.gov/arh/>

### **Avalanche Conditions:**



**Summit Lake**-High above 1,000', Considerable below 1,000'.

**Turnagain Pass**-High above 1,000', Considerable below 1,000'.

**Hatcher Pass**-Moderate above 2500', Low below 2500'.

For more information and the most current avalanche conditions, go to: <https://alaskasnow.org/>

**The Next Situation Report** will be on **January 10, 2025**. An interim report will be prompted by a significant change in the situation or the threat level. This report is posted on the internet at

<https://ready.alaska.gov/sitrep>.

**To register for email distribution, PLEASE go to:**

<http://list.state.ak.us/mailman/listinfo/dhsem.situation.report>.

Direct questions regarding this report to the SEOC at 907-428-7100 or [seoc@alaska.gov](mailto:seoc@alaska.gov).